

# HALFEN SBC STEEL BALCONY CONNECTOR

## Introduction

Halfen's SBC steel balcony connection system provides an economic and practical method for connecting steel balconies to concrete frames. The system comprises two main components:

- The SBC anchor assembly which is cast into the reinforced concrete slab.
- The SBC bracket which is bolted on to the assembly and unlike some other systems, enables the masonry or cladding to be completed before installation of the balconies.

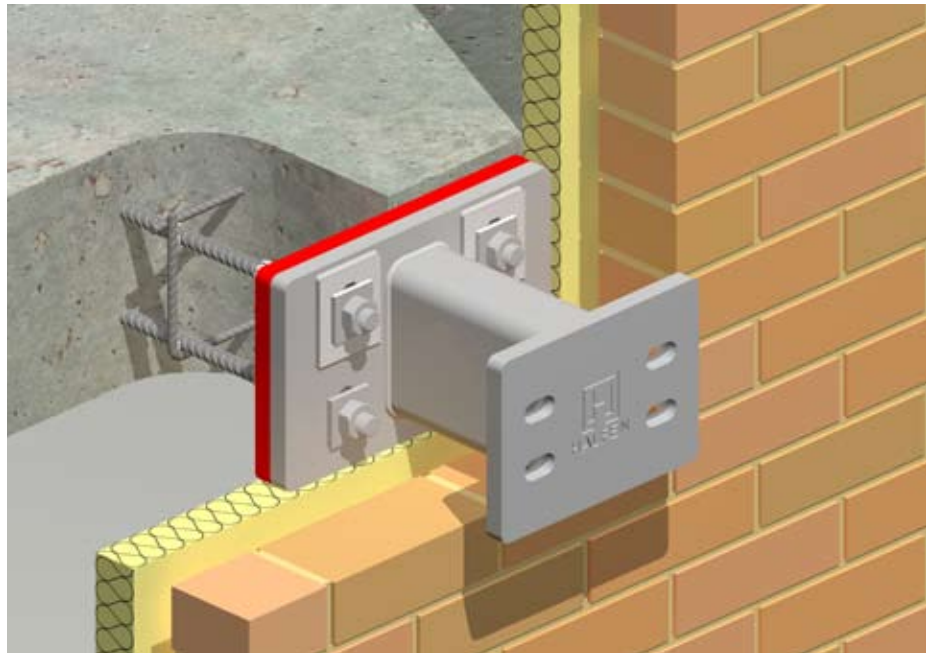
## Cast-in anchor assembly



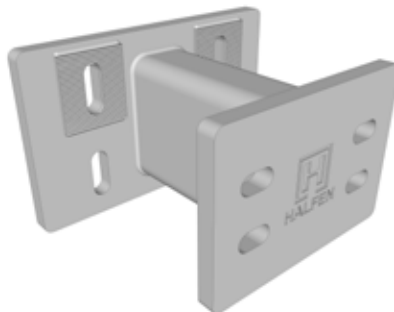
The SBC anchor assembly can be easily fixed to the side (stop end) shuttering of the slab to provide an economic, high capacity connection into the concrete. The anchor assembly avoids the need for complicated modifications to the shuttering and is designed to fit between the reinforcement layers of most normal floor slabs. Fixing into the edge of the concrete slab avoids the potential clashes with the floor finishes, tolerance problems and cold bridging issues associated with top fixing brackets.

## Thermal separator

The SBC-TSS 10 thermal separator is available for the bracket to minimise the thermal conductivity of the connection.



## Balcony bracket



The SBC bracket allows both horizontal and vertical adjustment. The rectangular body of the bracket passes easily through the facade and allows the bracket penetration to be neatly and aesthetically sealed and trimmed. The front plate provides a convenient connection surface beyond the façade line to enable the steel balcony to be bolted on at a later, more appropriate/convenient time.

This ensures clear access for the cladding trades and avoids potential damage to the balcony finishes. The SBC bracket is supplied complete with a hot dipped galvanized finish as standard.

## Key features

- Easy to install
- Convenient slab edge connection
- An efficient method of connection - steel balconies can be bolted on to the front plate after the brickwork or cladding has been completed.
- Thermal separation of the bracket
- Easy to finish and seal around the bracket body
- Horizontal and vertical adjustment.

For further information please contact Halfen.

