

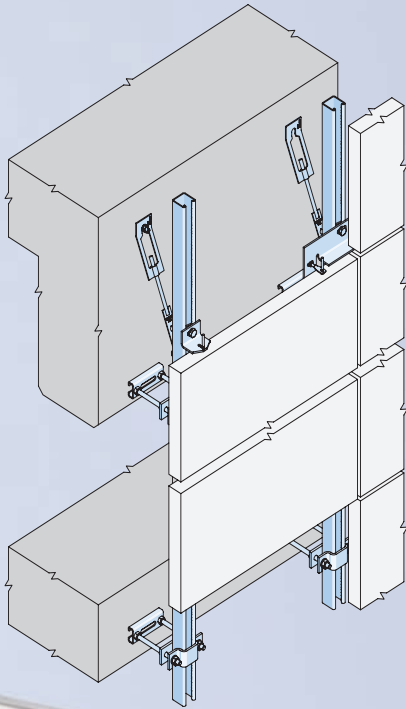
CAPITAL EAST

ROYAL VICTORIA DOCK- LONDON



HALFEN·DEHA

YOUR BEST CONNECTIONS



Designed by architects Squire & Partners with Eastwood & Partners as structural engineers, the block of apartments is part of the Barratt (East London) Ltd's Royal Victoria Docks development in London's Docklands.

Chartway were responsible for co-ordinating the external envelope including the structural background and insulation for the building. Early involvement with Halfen resulted in the specification of the SUK suspended channel system which has support and retaining anchors that are continuously variable in height and can cater for cavity widths up to 160mm.

Faced with the need to secure 40mm thick limestone cladding panels back to the structural frame whilst creating wide cavities to maintain the building line, Chartway Specialist Contractors in conjunction with Allard et Fils specified Halfen's SUK stonework support system, which is particularly suited to large and varying cavity widths.

Steel framing designed by Chartway was fixed between floor slabs to form the inner leaf. Stone support system restraint connections were then made to the frame with insulation cut around to fit. With few uncomplicated components, the SUK system proved to be simple and quick to install.

Client:
Barratt (East London) Ltd

Architect:
Squire & Partners

Engineer:
Eastwood & Partners

Main Contractor:
Barratt (East London) Ltd

Stone Installer:
Allard Et Fils

System Installer:
Chartway Specialist Contractors



HALFEN-DEHA
YOUR BEST CONNECTIONS

Halfen Limited Humphrys Road Woodside Estate Dunstable LU5 4TP
Tel: 08705 316 300 Fax: 08705 316 304
Email: info@halfen.co.uk Web: www.halfen.co.uk