

## HALFEN Swiss AG

Hertistrasse 25

CH-8304 Wallisellen

Telefon +41 (0) 44 849 78 78

Telefax +41 (0) 44 849 78 79

Objekt *Objet / Oggetto*

Bauteil *Partie à construire / Parte costruttiva*

Ingenieur *Ingenieur / Ingegnere*

Bauunternehmung *Entrepreneur / Impresa costruzioni*

Liste Nr. *Liste no / Lista no*

Plan Nr. *Plan no. / Piano no.*

Datum *Date / Data*

Gezeichnet *Dessiner / Disegnatore*

Liefertermin *Date de livraison / Data di consegna*

Lieferadresse *Adresse de livraison / Indirizzo di consegna*

Tel. Baustelle *Tél. chantier / Tel. cantiere*


Typ 2 Type / Tipo C Ulmaco	Bewehrung Armature / Armatura					Wand Mur / Muro		Gehäuse Boîtes / Cassonetto		CISA Typ Type / Tipo	Anzahl [STK] Nombre / Numero				
	d <sub>s</sub> [mm]	s [cm]	l <sub>bd</sub> [cm]	h [cm]	b [cm]	D <sub>1</sub> [cm]	D <sub>2</sub> [cm]	B [cm]	H <sub>2</sub> [cm]		L = 0.60 [m]	L = 0.90 [m]	L = 1.20 [m]	L = 1.80 [m]	L = 2.40 [m]
10	15	*)	15	-	20	var.	12.2	3.6	CISA c120 10/15						
			20		20				CISA c120 10/15x	n.v.	n.v.				
			25		25				CISA c120 10/15y						
			30		30				CISA c120 10/15z						
12	15	*)	15	-	20	var.	12.2	3.6	CISA c120 12/15x						
			20		25				CISA c120 12/15y						
			25		30				CISA c120 12/15z						
14	15	*)	15	-	20	var.	12.2	3.6	CISA c120 14/15x						
			20		25				CISA c120 14/15y						
			25		30				CISA c120 14/15z						
			30		35				CISA c120 14/15z3						
			40		45				CISA c120 14/15z4						

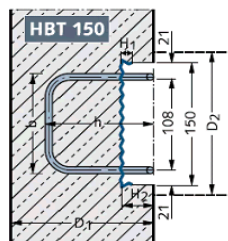
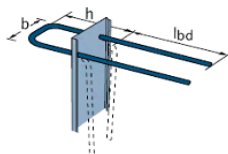
Typ 4 Type / Tipo STA Ulmaco	Bewehrung Armature / Armatura					Wand Mur / Muro		Gehäuse Boîtes / Cassonetto		CISA Typ Type / Tipo	Anzahl [STK] Nombre / Numero				
	d <sub>s</sub> [mm]	s [cm]	l <sub>bd</sub> [cm]	h [cm]	b [cm]	D <sub>1</sub> [cm]	D <sub>2</sub> [cm]	B [cm]	H <sub>2</sub> [cm]		L = 0.60 [m]	L = 0.90 [m]	L = 1.20 [m]	L = 1.80 [m]	L = 2.40 [m]
14	15	*)	15	24	20	≥ 29	28	3.6	CISA 280 14/15x						
			25		30				CISA 280 14/15z						
			30		35				CISA 280 14/15z3						
			40		45				CISA 280 14/15z4						
14	15	*)	15	34	20	≥ 39	38	3.6	CISA 380 14/15x						
			25		30				CISA 380 14/15z						
			30		35				CISA 380 14/15z3						
			40		45				CISA 380 14/15z4						
14	15	*)	15	44	20	≥ 49	48	3.6	CISA 480 14/15x						
			25		30				CISA 480 14/15z						
			30		35				CISA 480 14/15z3						
			40		45				CISA 480 14/15z4						

**HALFEN Swiss AG**

Hertistrasse 25  
 CH-8304 Wallisellen  
 Telefon +41 (0) 44 849 78 78  
 Telefax +41 (0) 44 849 78 79

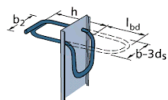


**Typ 5**  
 Type / Tipo ST Ulmaco



Bewehrung Armature / Armatura					Wand Mur / Muro		Gehäuse Boîtes / Cassonetto		CISA	Anzahl [STK] Nombre / Numero				
d <sub>s</sub> [mm]	s [cm]	l <sub>bd</sub> [cm]	h [cm]	b [cm]	D <sub>1</sub> [cm]	D <sub>2</sub> [cm]	B [cm]	H <sub>2</sub> [cm]	Typ Type / Tipo	L = 0.60 [m]	L = 0.90 [m]	L = 1.20 [m]	L = 1.80 [m]	L = 2.40 [m]
10	15	*)	12 15	9	15 20	15-16	12.2	3.6	CISA s120 10/15 CISA 120 10/15					
10	15	*)	15	12	20	17-20	15	3.6	CISA 150 10/15					
			15		20				CISA 150 10/15x	n.v.	n.v.			
			20		25				CISA 150 10/15y					
			25		30				CISA 150 10/15z					
12		*)	15	12	20				CISA 150 12/15x					
			20		25				CISA 150 12/15y					
			25		30				CISA 150 12/15z					
10	15	*)	15	16	20	21-25	18.6	3.6	CISA 190 10/15					
			15		20				CISA 190 10/15x	n.v.	n.v.			
			20		25				CISA 190 10/15y					
			25		30				CISA 190 10/15z					
12		*)	15	16	20				CISA 190 12/15x					
			20		25				CISA 190 12/15y					
			25		30				CISA 190 12/15z					
14		*)	15	16	20				CISA 190 14/15x					
			25		30				CISA 190 14/15z					
10	15	*)	15	21	20	≥26	24	3.6	CISA 240 10/15					
			15		20				CISA 240 10/15x	n.v.	n.v.			
			20		25				CISA 240 10/15y					
			25		30				CISA 240 10/15z					
12		*)	15	21	20				CISA 240 12/15x					
			20		25				CISA 240 12/15y					
			25		30				CISA 240 12/15z					
14		*)	15	21	20				CISA 240 14/15x					
			25		30				CISA 240 14/15z					
			30		35				CISA 240 14/15z3					
14		*)	40	21	45				CISA 240 14/15z4					

**Typ 7**  
 Type / Tipo K Ulmaco



Bewehrung Armature / Armatura					Wand Mur / Muro		Gehäuse Boîtes / Cassonetto		CISA	Anzahl [STK] Nombre / Numero				
d <sub>s</sub> [mm]	s [cm]	l <sub>bd</sub> [cm]	h [cm]	b [cm]	D <sub>1</sub> [cm]	D <sub>2</sub> [cm]	B [cm]	H <sub>2</sub> [cm]	Typ Type / Tipo	L = 0.60 [m]	L = 0.90 [m]	L = 1.20 [m]	L = 1.80 [m]	L = 2.40 [m]
10	15	14	15	12	20	17-20	15	3.6	CISA k150 10/15					
12			20		25				CISA k150 12/15x					
			18		30				CISA k150 12/15y CISA k150 12/15z					
12	15	14	15	16	20	21-25	19	3.6	CISA k190 12/15x					
			20		25				CISA k190 12/15y					
			18		30				CISA k190 12/15z					

## HALFEN Swiss AG

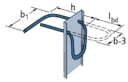
Hertistrasse 25

CH-8304 Wallisellen

Telefon +41 (0) 44 849 78 78

Telefax +41 (0) 44 849 78 79

Typ 8 Type / Tipo K2 Ulmaco		Bewehrung Armature / Armatura				Wand Mur / Muro		Gehäuse Boîtes / Cassonetto		CISA	Anzahl [STK] Nombre / Numero
		d <sub>s</sub> [mm]	s [cm]	l <sub>bd</sub> [cm]	h [cm]	b [cm]	D <sub>1</sub> [cm]	D <sub>2</sub> [cm]	B [cm]	H <sub>2</sub> [cm]	Typ Type / Tipo
12	15	18	15	12	20	17-20	15	3.6	CISA k2150 12/15x		
			20		25				CISA k2150 12/15y		
			25		30				CISA k2150 12/15z		
10	15	14	20	16	25	21-25	19	3.6	CISA k2190 10/15y		
			25		30				CISA k2190 10/15z		
			15		20				CISA k2190 12/15x		
12	15	18	20	16	25	21-25	19	3.6	CISA k2190 12/15y		
			22		30				CISA k2190 12/15z		
			25		30				CISA k2190 12/15z		
12	15	22	20	21	25	≥26	24	3.6	CISA k2240 12/15y		
			25		30				CISA k2240 12/15z		



	Stücklänge [m] Longeur / lungo				
	0.60	0.90	1.20	1.80	2.40
<sup>1)</sup> l <sub>bd</sub> ø10 [cm]	36	50	50	50	50
<sup>2)</sup> l <sub>bd</sub> ø10 Typ X [cm]	-	-	60	60	60
<sup>1)</sup> l <sub>bd</sub> ø12 [cm]	36	50	60	60	60
<sup>1)</sup> l <sub>bd</sub> ø14, Typ 190 [cm]	36	50	66	66	66
<sup>1)</sup> l <sub>bd</sub> ø14, Typ 240 [cm]	36	50	66	84	84
<sup>1)</sup> l <sub>bd</sub> ø14, Typ 120/280/380/480 [cm]	36	50	66	96	96