

**Bestellung**

**HALFEN Rückbiegeanschluss**

**HBT**

Commande / Ordine

HALFEN Reprises d'armature / Armatura di ripresa

HALFEN Swiss AG  
 Hertstrasse 25  
 CH-8304 Wallisellen  
 Telefon +41 (0)44 849 78 78  
 Telefax +41 (0)44 849 78 79  
 info@halfen.ch  
 www.halfen.ch



Objekt / Objet / Oggetto

[Blank field for object name]

Bauteil / Partie à construire / Parte costruttiva

[Blank field for part name]

Ingenieur / Ingénieur / Ingegnere

[Blank field for engineer name]

Bauunternehmung / Entrepreneur / Impresa costruzioni

[Blank field for contractor name]

Liste Nr. / Liste no / Lista no

[Blank field for list number]

Plan Nr. / Plan no. / Piano no.

[Blank field for plan number]

Datum / Date / Data

[Blank field for date]

Gezeichnet / Dessiner / Disegnatore

[Blank field for designer name]

Liefertermin / Date de livraison / Data di consegna

[Blank field for delivery date]

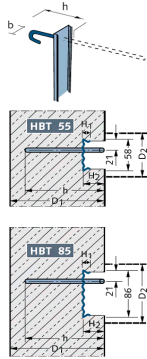
Lieferadresse / Adresse de livraison / Indirizzo di consegna

[Blank field for delivery address]

Tel. Baustelle / Tel. chantier / Tel. cantiere

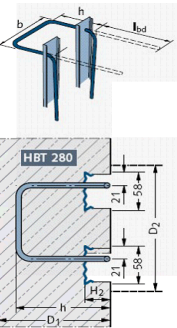
[Blank field for site phone number]

**Typ 2**  
Type / Tipo C Ulmaco



Bewehrung / Armature / Armatura					Wand / Mur / Muro		Gehäuse / Boîtes / Cassonetto		HBT	Anzahl [STK] / Quantité [pcs] / Quantità [pz]	
d <sub>s</sub> [mm]	s [cm]	l <sub>bd</sub> [cm]	h [cm]	b [cm]	D <sub>1</sub> [cm]	D <sub>2</sub> [cm]	B [cm]	H <sub>2</sub> [cm]	Typ / Type / Tipo	L = 1.25 [m]	L = * 0.85 [m]
8	15	40	15	-	≥ 19	≥ 6	5.8	3.6	55 8/15-CH		
	20								55 8/20-CH		
10	15	50	15	-	≥ 19	≥ 6	5.8	3.6	55 10/15-CH		
			20						85 10/15-CH		
12	15	60	25	-	≥ 19	≥ 9	8.6	3.6	85 10/15z-CH		
			20						85 12/15x-CH		
			15						85 12/15y-CH		
14	15	60	25	-	≥ 19	≥ 9	8.6	3.6	85 12/15z-CH		
			25						85 14/15x-CH		
			25						85 14/15z-CH		

**Typ 4**  
Type / Tipo STA Ulmaco



Bewehrung / Armature / Armatura					Wand / Mur / Muro		Gehäuse / Boîtes / Cassonetto		HBT	Anzahl [STK] / Quantité [pcs] / Quantità [pz]		
d <sub>s</sub> [mm]	s [cm]	l <sub>bd</sub> [cm]	h [cm]	b [cm]	D <sub>1</sub> [cm]	D <sub>2</sub> [cm]	B [cm]	H <sub>2</sub> [cm]	Typ / Type / Tipo	L = 1.25 [m]	L = * 0.85 [m]	
10	15	40	15	12	20	17	16	3.6	160 10/15-CH			
				14					180 10/15-CH			
12	15	60	15	-	20	19	18	3.6	180 12/15x-CH			
									17	210 8/20-CH		
8	20	40	15	-	20	22	21	3.6	210 10/15-CH			
									17	210 12/15x-CH		
									15	250 10/15-CH		
10	15	50	15	-	20	25	25	3.6	250 12/15x-CH			
									17	250 12/15y-CH		
12	15	60	15	-	20	26	25	3.6	250 12/15z-CH			
									20	250 14/15x-CH		
									15	250 14/15y-CH		
14	15	56	15	-	25	30	25	3.6	250 14/15z-CH			
									25			

Bestellung  
Comande / Ordine

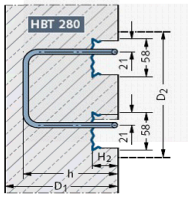
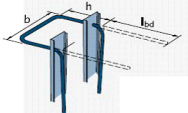
HALFEN Rückbiegeanschluss  
HALFEN Reprises d'armature / Armatura di ripresa

HBT

HALFEN Swiss AG  
Hertstrasse 25  
CH-8304 Wallisellen  
Telefon +41 (0)44 849 78 78  
Telefax +41 (0)44 849 78 79  
info@halfen.ch  
www.halfen.ch

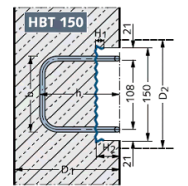
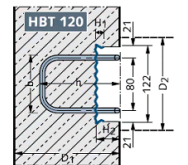
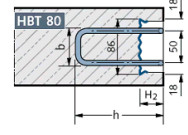
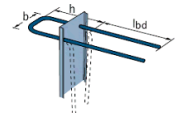


**Typ 4**  
Type / Tipo STA UImaco



Bewehrung Armature / Armatura					Wand Mur / Muro		Gehäuse Boîtes / Cassonetto		HBT		Anzahl [STK] Quantité [pcs] / Quantità [pz]				
d <sub>s</sub> [mm]	s [cm]	l <sub>bd</sub> [cm]	h [cm]	b [cm]	D <sub>1</sub> [cm]	D <sub>2</sub> [cm]	B [cm]	H <sub>2</sub> [cm]	Typ Type / Tipo	L = 1.25 [m]	L = *) 0.85 [m]				
8	15	40	15	24	20	30	28	3.6	280 8/15-CH						
	20		15						280 8/20-CH						
10	15	50	15		20				25	30	28	3.6	280 10/15-CH		
			20		280 10/15y-CH										
			25		280 10/15z-CH										
12	15	60	15		20				25	30	28	3.6	280 10/20-CH		
			20		280 12/15x-CH										
			25		280 12/15y-CH										
			30		280 12/15z-CH										
14	15	56	15		20				25	30	28	3.6	280 14/15x-CH		
			20		280 14/15y-CH										
			25		280 14/15z-CH										
			30		280 14/15z3-CH										
14	15	56	25		30				35	40	38	3.6	280 14/15z4-CH		
			30		380 14/15x-CH										
			35		380 14/15y-CH										
			40	380 14/15z-CH											
14	15	56	25	30	35	40	38	3.6	380 14/15z3-CH						
			30	380 14/15z4-CH											
			35	480 14/15x-CH											
			40	480 14/15y-CH											
14	15	56	25	44	35	50	48	3.6	480 14/15z-CH						
			30	480 14/15z3-CH											
			35	480 14/15z4-CH											
			40												

**Typ 5**  
Type / Tipo ST UImaco



Bewehrung Armature / Armatura					Wand Mur / Muro		Gehäuse Boîtes / Cassonetto		HBT		Anzahl [STK] Quantité [pcs] / Quantità [pz]				
d <sub>s</sub> [mm]	s [cm]	l <sub>bd</sub> [cm]	h [cm]	b [cm]	D <sub>1</sub> [cm]	D <sub>2</sub> [cm]	B [cm]	H <sub>2</sub> [cm]	Typ Type / Tipo	L = 1.25 [m]	L = *) 0.85 [m]				
8	15	40	12	6	15	12	8.6	3.6	80 8/15-CH						
	20		12						80 8/20-CH						
8	15	40	12		9				15	15	12.2	3.6	s120 8/15-CH		
			12		s120 8/20-CH										
			12		s120 10/15-CH										
10	15	50	12		9				15	15	12.2	3.6	s120 10/20-CH		
			15		120 8/15-CH										
			20		120 8/20-CH										
			25		120 10/15-CH										
12	15	40	20		9				25	30	12.2	3.6	120 10/20-CH		
			25		120 12/15x-CH										
			30		120 12/15y-CH										
			35		120 12/15z-CH										
8	15	40	8		11				20	18-20	15	3.6	s150 8/15-CH		
			15		150 8/15-CH										
			20		150 8/20-CH										
			25	s150 10/15-CH											
10	15	50	12	15	25	30	15	3.6	150 10/15-CH						
			15	150 10/15y-CH											
			20	150 10/15z-CH											
			25	150 10/20-CH											
12	15	60	15	12	25	30	15	3.6	150 12/15x-CH						
			20	150 12/15y-CH											
			25	150 12/15z-CH											
			30												

Bestellung

HALFEN Rückbiegeanschluss

HBT

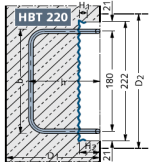
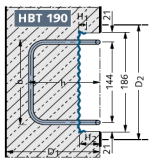
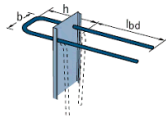
Commande / Ordine

HALFEN Reprises d'armature / Armatura di ripresa

HALFEN Swiss AG  
Hertstrasse 25  
CH-8304 Wallisellen  
Telefon +41 (0)44 849 78 78  
Telefax +41 (0)44 849 78 79  
info@halfen.ch  
www.halfen.ch



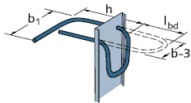
**Typ 5**  
Type / Tipo ST Ulmaco



Bewehrung Armature / Armatura				Wand Mur / Muro	Gehäuse Boîtes / Cassonetto			
d <sub>s</sub> [mm]	s [cm]	l <sub>bd</sub> [cm]	h [cm]		D <sub>1</sub> [cm]	D <sub>2</sub> [cm]	B [cm]	H <sub>2</sub> [cm]
14	15	48	15	16	20	22	18.6	3.6
			20					
			25					
			25					
8	15	40	15	19	20	25	22.2	3.6
			20					
10	15	50	15	16	20	22	18.6	3.6
			20					
			25					
			25					
12	15	60	15	19	20	25	22.2	3.6
			20					
			25					
			25					
14	15	57	15	16	20	22	18.6	3.6
			20					
			25					
			25					
8	15	40	15	19	20	25	22.2	3.6
			20					
			25					
			25					
10	15	50	15	16	20	22	18.6	3.6
			20					
			25					
			25					
12	15	60	15	19	20	25	22.2	3.6
			20					
			25					
			25					
14	15	57	15	16	20	22	18.6	3.6
			20					
			25					
			25					

HBT	Anzahl [STK] Quantité [pcs] / Quantità [pz]
Typ Type / Tipo	L = 1.25 [m]    L = * 0.85 [m]
150 14/15x-CH	
150 14/15y-CH	
150 14-15z-CH	
190 8/15-CH	
190 8/20-CH	
190 10/15-CH	
190 10/15y-CH	
190 10/15z-CH	
190 10/20-CH	
190 12/15x-CH	
190 12/15y-CH	
190 12/15z-CH	
190 14/15x-CH	
190 14/15y-CH	
190 14/15z-CH	
220 8/15-CH	
220 8/20-CH	
220 10/15-CH	
220 10/15y-CH	
220 10/15z-CH	
220 10/20-CH	
220 12/15x-CH	
220 12/15y-CH	
220 12/15z-CH	
220 14/15x-CH	
220 14/15y-CH	
220 14/15z-CH	

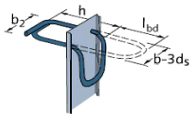
**Typ 7**  
Type / Tipo K3 Ulmaco



Bewehrung Armature / Armatura					Wand Mur / Muro	Gehäuse Boîtes / Cassonetto			
d <sub>s</sub> [mm]	s [cm]	l <sub>bd</sub> [cm]	h [cm]	b [cm]		D <sub>1</sub> [cm]	D <sub>2</sub> [cm]	B [cm]	H <sub>2</sub> [cm]
10	20	18	15	12	20	18-20	15	18.6	3.6
			20	16					
			25						
			25						

HBT	Anzahl [STK] Quantité [pcs] / Quantità [pz]
Typ Type / Tipo	L = 1.25 [m]    L = * 0.85 [m]
k2150 10/20-CH	
k2190 10/20-CH	
k2190 10/20y-CH	
k2190 10/20z-CH	

**Typ 8**  
Type / Tipo K Ulmaco



Bewehrung Armature / Armatura					Wand Mur / Muro	Gehäuse Boîtes / Cassonetto			
d <sub>s</sub> [mm]	s [cm]	l <sub>bd</sub> [cm]	h [cm]	b [cm]		D <sub>1</sub> [cm]	D <sub>2</sub> [cm]	B [cm]	H <sub>2</sub> [cm]
10	20	18	9	9	20	15	12.2	18.6	3.6
			15	12					
			15	12					
			20	16					

HBT	Anzahl [STK] Quantité [pcs] / Quantità [pz]
Typ Type / Tipo	L = 1.25 [m]    L = * 0.85 [m]
k120 10/20-CH	
k150 10/15-CH	
k150 10/20-CH	
k190 10/20-CH	

Bestellung  
Comande / Ordine

HALFEN Rückbiegeanschluss  
HALFEN Reprises d'armature / Armatura di ripresa

HBT

HALFEN Swiss AG  
Hertstrasse 25  
CH-8304 Wallisellen  
Telefon +41 (0)44 849 78 78  
Telefax +41 (0)44 849 78 79  
info@halfen.ch  
www.halfen.ch

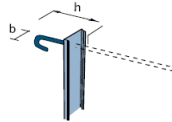


Sonderkonstruktion  
Exécutions spéciales  
Eseguzione speciale

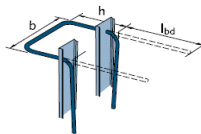
	Bewehrung Armature / Armatura					Wand Mur / Muro		Gehäuse Boîtes / Cassonetto		HBT	Anzahl [STK] Quantité [pcs] / Quantità [pz]	
	$d_s$ [mm]	s [cm]	$l_{bd}$ [cm]	h [cm]	b [cm]	$D_1$ [cm]	$D_2$ [cm]	B [cm]	$H_2$ [cm]	Typ Type / Tipo	L = 1.25 [m]	L = *) 0.85 [m]
	12	15	60	24	35	-	45	-	-	Typ 5	5	-
	10	20	50	25	-	-	-	-	-	Typ 2	-	12

Beispiel  
Exemple / Esempio

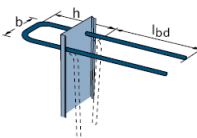
Typ 2  
Typ C Ulmaco



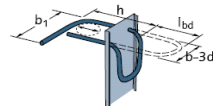
Typ 4  
Typ STA Ulmaco



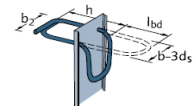
Typ 5  
Typ ST Ulmaco



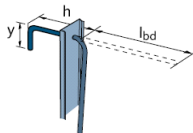
Typ 7  
Typ K2 Ulmaco



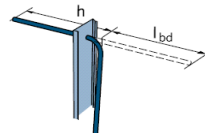
Typ 8  
Typ K Ulmaco



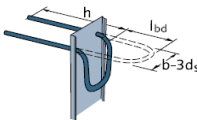
Typ 1  
Typ C2 Ulmaco



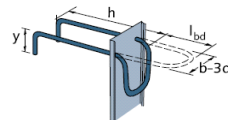
Typ 3  
Typ C1 Ulmaco



Typ 6  
Typ D Ulmaco



Typ 9



\*) Die 0,85 m Elemente werden mit einem  $l_{bd}$ -Mass von 40 cm geliefert.

Les éléments courts à 0,85 m sont livrés avec une dimension  $l_{bd}$  de 40 cm.

Gli elementi da 0,85 m sono forniti con una misura  $l_{bd}$  di 40 cm.