



HALFEN
A CRH COMPANY

HALFEN Swiss AG

Hertistrasse 25
CH-8304 Wallisellen
Telefon +41 (0)44 849 78 78
Telefax +41 (0)44 849 78 79
info@halfen.ch
www.halfen.ch

Objekt / Objet / Oggetto

Bauteil / Partie à construire / Parte costruttiva

Ingenieur / Ingénieur / Ingegnere

Bauunternehmung / Entrepreneur / Impresa costruzioni

Liste Nr. / Liste no / Lista no

Plan Nr. / Plan no. / Piano no.

Datum / Date / Data

Gezeichnet / Dessiner / Disegnatore

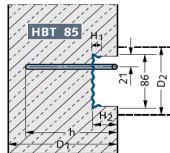
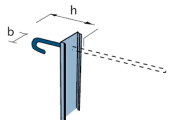
Liefertermin / Date de livraison / Data di consegna

Lieferadresse / Adresse de livraison / Indirizzo di consegna

Tel. Baustelle / Tel. chantier / Tel. cantiere

Typ 2

Type / Tipo C Ulmaco



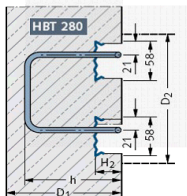
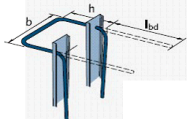
Bewehrung Armature / Armatura					Wand Mur / Muro		Gehäuse Boîtes / Cassonetto	
d _s [mm]	s [cm]	l _{bd} [cm]	h [cm]	b [cm]	D ₁ [cm]	D ₂ [cm]	B [cm]	H ₂ [cm]
10	15	50	15	-	20	var.	8.6	3.6
			20		25			
			25		30			
12	15	60	15	-	20	var.	8.6	3.6
			20		25			
			25		30			

ELI
Typ Type / Tipo
ELI 85 10/15
ELI 85 10/15y
ELI 85 10/15z
ELI 85 12/15x
ELI 85 12/15y
ELI 85 12/15z

Anzahl [STK] Nombre / Numero	
L = 1.25 [m]	L = 0.85 [m]

Typ 4

Type / Tipo STA Ulmaco



Bewehrung Armature / Armatura					Wand Mur / Muro		Gehäuse Boîtes / Cassonetto	
d _s [mm]	s [cm]	l _{bd} [cm]	h [cm]	b [cm]	D ₁ [cm]	D ₂ [cm]	B [cm]	H ₂ [cm]
10	15	50	15	24	20	30	28	3.6
			20		25			
			25		30			
12	15	60	15	24	20	30	28	3.6
			20		25			
			25		30			

ELI
Typ Type / Tipo
ELI 280 10/15
ELI 280 10/15y
ELI 280 10/15z
ELI 280 10/20
ELI 280 12/15x
ELI 280 12/15y
ELI 280 12/15z

Anzahl [STK] Nombre / Numero	
L = 1.25 [m]	L = 0.85 [m]



HALFEN Swiss AG

Hertistrasse 25

CH-8304 Wallisellen

Telefon +41 (0)44 849 78 78

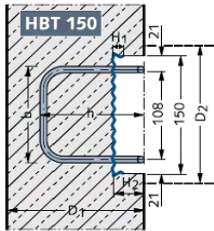
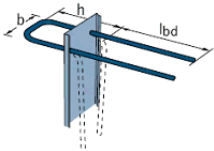
Telefax +41 (0)44 849 78 79

info@halfen.ch

www.halfen.ch

Typ 5

Type / Tipo ST Ulmaco



Bewehrung Armature / Armatura					Wand Mur / Muro		Gehäuse Boîtes / Cassonetto	
d _s [mm]	s [cm]	l _{bd} [cm]	h [cm]	b [cm]	D ₁ [cm]	D ₂ [cm]	B [cm]	H ₂ [cm]
8	15	40	12	6		12	8.6	
10	15	50	12	9	15	15	12.2	3.6
			15			20	12.2	
10	15	50	15	12	20	18-20	15	3.6
			20		25			
			25		30			
12	15	60	15	12	20	18-20	15	3.6
			20		25			
			25		30			
10	15	50	15	16	20	22	18.6	3.6
			20		25			
			25		30			
12	15	60	15	16	20	22	18.6	3.6
			20		25			
			25		30			
10	15	50	15	19	20	25	22.2	3.6
			20		25			
			25		30			
12	15	60	15	19	20	25	22.2	3.6
			20		25			
			25		30			

ELI

Typ
Type / Tipo

ELI 80 8/15

ELI s120 10/15

ELI 120 10/15

ELI 150 10/15

ELI 150 10/15y

ELI 150 10/15z

ELI 150 10/20

ELI 150 12/15x

ELI 150 12/15y

ELI 150 12/15z

ELI 190 10/15

ELI 190 10/15y

ELI 190 10/15z

ELI 190 10/20

ELI 190 12/15x

ELI 190 12/15y

ELI 190 12/15z

ELI 220 10/15

ELI 220 10/15y

ELI 220 10/15z

ELI 220 10/20

ELI 220 12/15x

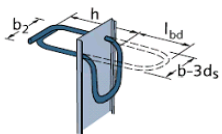
ELI 220 12/15y

ELI 220 12/15z

Anzahl [STK]
Nombre / NumeroL =
1.25
[m]L =
0.85
[m]

Typ 8

Type / Tipo K Ulmaco



Bewehrung Armature / Armatura					Wand Mur / Muro		Gehäuse Boîtes / Cassonetto	
d _s [mm]	s [cm]	l _{bd} [cm]	h [cm]	b [cm]	D ₁ [cm]	D ₂ [cm]	B [cm]	H ₂ [cm]
10	20	18	15	9	20	15	12.2	3.6
10	15	13	15	12	20	18-20	15	3.6
	20	18						

ELI

Typ
Type / Tipo

ELI k120 10/20

ELI k150 10/15

ELI k150 10/20

Anzahl [STK]
Nombre / NumeroL =
1.25
[m]L =
0.85
[m]